

echelon

bottle storage system



12 BOTTLE KIT - KWR12



24 BOTTLE KIT - KWR24

ARCHITECTURAL WINE RACK KITS

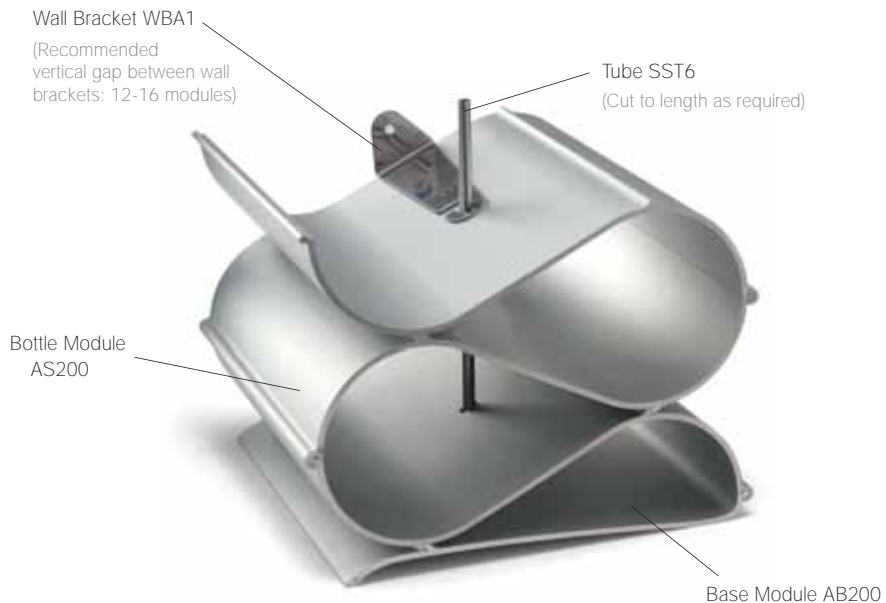
The Wine Rack System

The echelon 12 and 24 bottle kits are sized conveniently for inclusion into kitchen and cabinet joinery. They can also free stand with no surrounding joinery if desired. Recommended internal dimensions for joinery can be found on pages 4 and 5.

This bottle storage system is modular so that configurations can be changed to suit the available space. Modules can be added or removed as required and individual components can be purchased separately. Instructions on calculating dimensions can be found on page 6.

The racks are made from extruded aluminium and coated with a natural satin anodising. The individual modules slide and snap together to form the bottom of one bottle cavity and the top of the next. In this way stacks can be built to the required height working from the base up. Multiple stacks can then nest side by side to create a continuous storage rack. The system is very space efficient with a capacity of over 90 bottles per square metre.

Each module is supplied with a centre hole through which a tube is inserted once stack is assembled. Wall brackets hook around this tube and screw to the wall to secure. Be sure the stacks are placed on a horizontal surface with adequate strength to support the combined weight of rack and bottles.

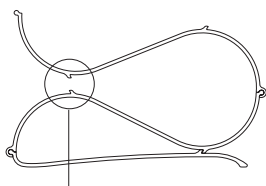


Kit Contents

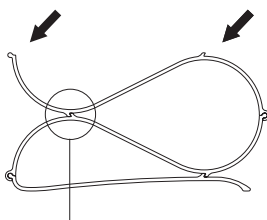
ITEM	PART #	DESCRIPTION	KWR12 QUANTITY	KWR24 QUANTITY
	AS200	Aluminium Bottle Module 200mm depth (front to rear) Supplied with centre hole for tube & bracket	14	26
	AB200	Aluminium Base Module 200mm depth (front to rear)	2	2
	WBA1	Stainless Steel Wall Bracket Use with 1/4" or 6mm tube/rod to secure racks to wall	4	4
	SST6	Stainless Steel Tube 6mm diameter.	2 x 1285mm	2 x 1285mm
	TDP1	Tube Dowel - use to connect tubes when configuring non-standard heights	2	2

Assembly Instructions

Assemble modules using this method:



Keep dovetails separate



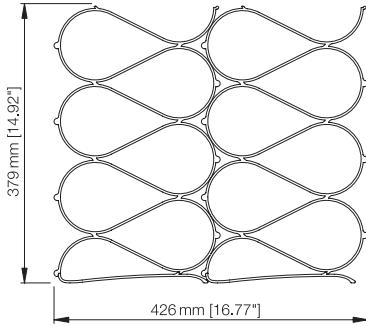
Dovetails snap together



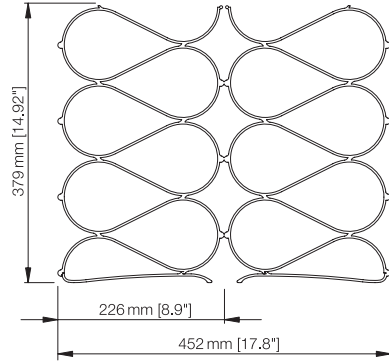
- Slide modules together as shown. Ensure that dovetails are separated.
 - When in position, apply pressure where indicated by arrows. The flexibility of the aluminium will allow the dovetails to snap together. Add additional modules to build stack.
 - When stack is complete, insert tube through centre holes.
 - Locate stack into position and hook Wall Brackets around tube. Secure to wall using appropriate fasteners.
- Use the Tube Dowels to connect tubes when additional height is required.

dimensions

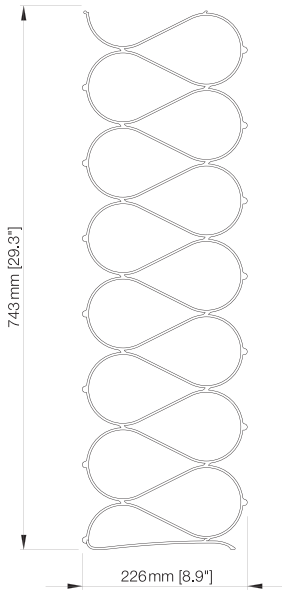
12 BOTTLE KIT



Standard Configuration



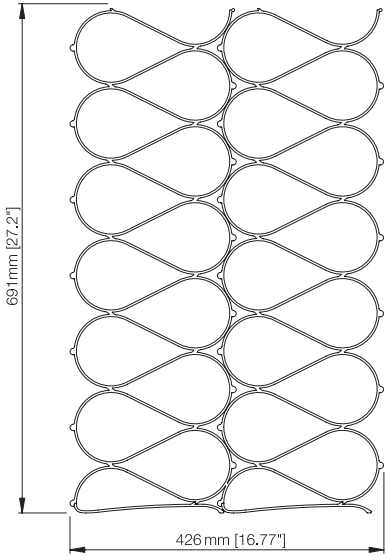
Alternative "Mirrored" Configuration



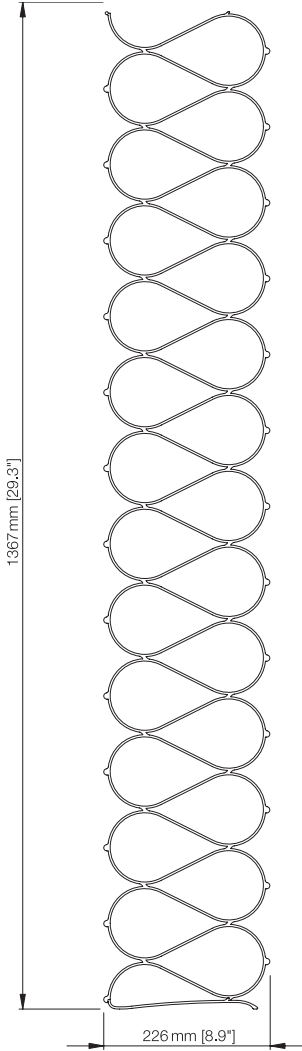
*Can be arranged in a single stack

dimensions

24 BOTTLE KIT



Standard Configuration



*Can be arranged in a single stack

How to Calculate Height and Width for Multiple Stacks

HEIGHT

The Base Module has a height of 15mm.
Each Bottle Module adds 52mm.

Calculation example:
Stack of 12 Bottle Modules

	1 x Base Module	15mm
+	12 x Bottle Modules @ 52mm	624mm
	TOTAL HEIGHT	639mm

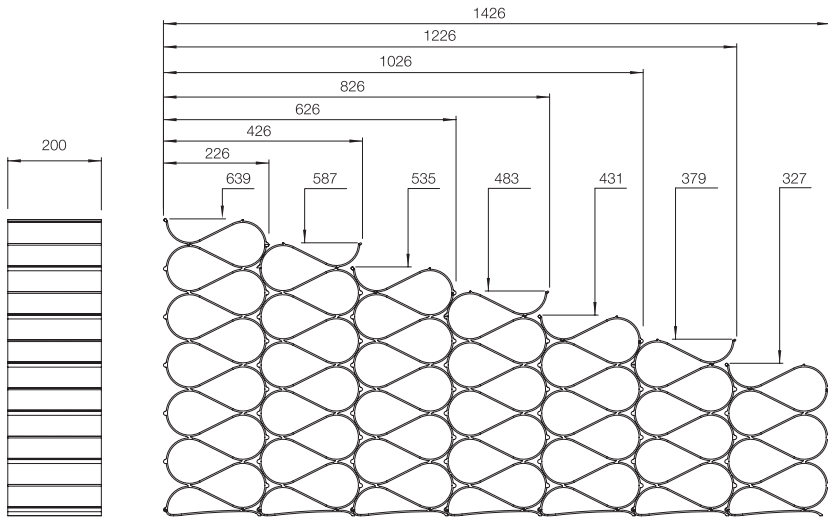
WIDTH

One stack of Bottle Modules has a width of 226mm. Each additional stack adds 200mm.

Calculation example:
Multi-storage unit four stacks wide

	1st Stack	226mm
+	3 x Additional Stacks @ 200mm	600mm
	TOTAL HEIGHT	826mm

Examples of Stack Height and Width



Side View

12 bottle stack

6 bottle stack



EXAMPLES



echelon

Echelon Products Pty Ltd
PO Box 1152 Double Bay NSW 1360
AUSTRALIA

Tel +612 9328 5999 Fax +612 9328 5699
www.echelonproducts.com